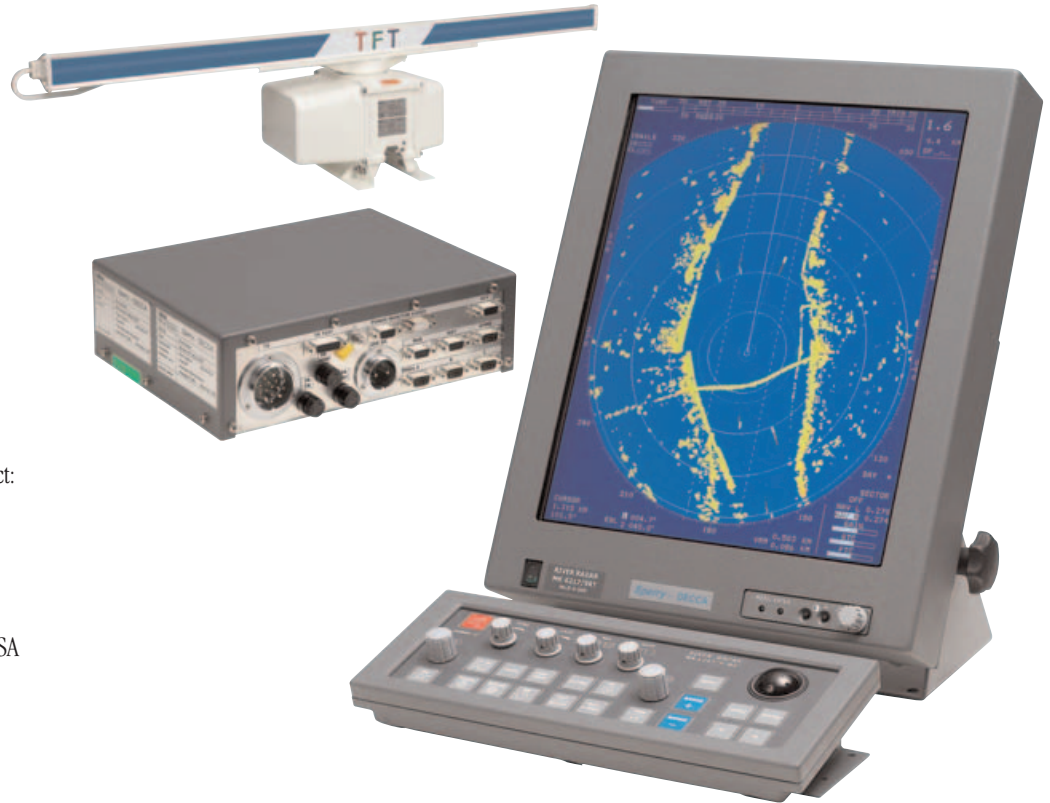


## **Sperry-DECCA MK 6217/9 TFT River Radar**

*Our radar is easily installed, maintained and meets the standards of the Rhine River Radar Specification.*



### **Sperry Marine**

**[www.sperry-marine.com](http://www.sperry-marine.com)**

For more information, please contact:  
Sperry Marine

USA  
1070 Seminole Trail  
Charlottesville, VA 22901-2891 USA  
Ph: +1 434-974-2000  
Fax: +1 434-974-2259  
ISO9001

UK  
118 Burlington Road  
New Malden  
Surrey KT3 4NR  
England  
Ph: +44 (0)20 8329 2000  
Fax: +44 (0)20 8 329 2415  
ISO 9001

Germany  
Stueckenstrasse 1-3a  
D-22081 Hamburg  
Germany  
Ph: +49-40-299 00-0  
Fax: +49-40-299 00-298  
Telex: 2 15 202 a plath d  
ISO 9001

Holland  
James Wettweg 22  
3133 KK Vlaardingen  
Holland  
Tel: 31 10 44 51 666  
Fax: 31 10 43 46 102

- **Compact 18.1 inch slim & robust flat panel display**
- **Bright multi-colour picture**
- **Multi-level video, target trails**
- **Compact and low noise radar data processor**
- **Range scales from 150m to 64km**
- **Menu controlled set-up and dedicated controls for top level functions**
- **Secondary VRM/EBL and a cursor**
- **Rate of turn and rudder indicator**
- **Navigation lines**
- **Ship's profile outline**
- **6kW nominal peak power**
- **7 or 9ft antenna with two speeds**

The DECCA MK6217/9 River Radar offers a high resolution colour TFT flat panel display. The radar signal is processed and displayed with a high degree of accuracy to improve safety of vessels navigating on rivers, channels, narrow waters, entering or leaving harbours.

## Additional Information

### Display Unit (Monitor, Control Panel, Radar Data Processor)

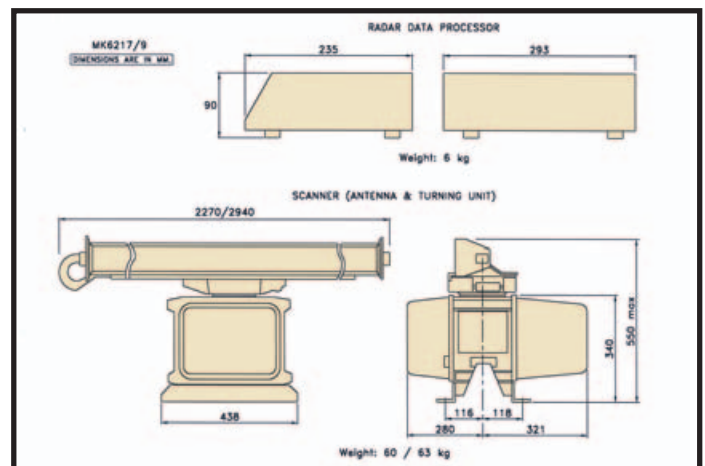
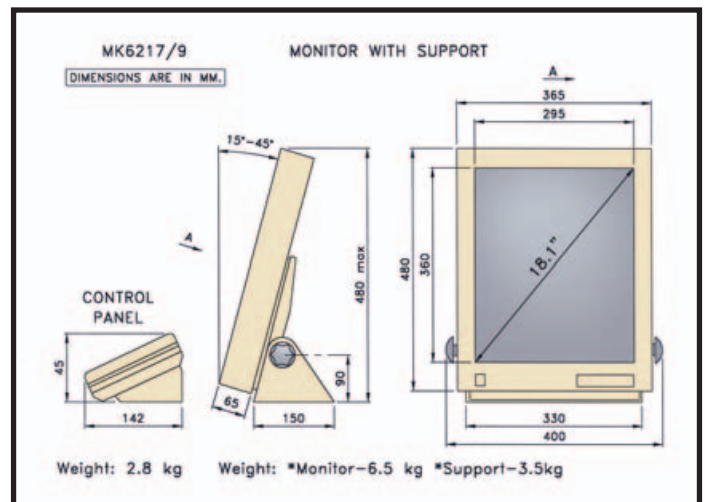
Display Screen:	18.1" TFT colour screen. High contrast, 1280 x 1024 pixels, continuous 50% look ahead extension with full 135 mm radius aft. Off-centering: up to 66%
Range/Rings:	150/50m, 300/100m, 500/100m, 800/200m, 1200/200m 1600/400m, 2km/400m, 4/1km, 8/2km, 16/4km, 32/8km, 64/16km. Equivalent ranges in nautical and statute miles selectable
Range Discrimination:	Better than 10m or 1%
VRM:	0.000 to 64km. Two independent rings
EBL Resolution:	0.1°. Two independent lines
Nav. Lines:	Two independent parallel lines
Cursor:	Trackball, range/bearing or latitude/longitude mode
Own Ship's Outline:	Adjustable to ship's requirement
Menus:	INTEN, VIDEO SET, SETUP. Temporarily displayed to control radar operation and installation set-up
Day/Night:	Two predefined and four adjustable sets of screen colours
Video Processing:	State-of-the art interference and clutter rejection, 16 level digitization, trails are shown in other non-conflicting colours
Rate of Turn and Rudder Indicator:	Scales at top of screen with configurable analogue inputs
NMEA Interfaces:	Three inputs from: GPS, compass, wind, water speed, depth, ROT, RSA if no analogue input
Installation:	Suitable for table, bulkhead, deckhead or console mounting
Input Voltage:	DC 24V
Power Consumption:	Less than 250W
Ambient Conditions:	Meets the "Regulations Regarding the Minimum Requirements and Test Conditions for Radar Equipment Used for River Rhine and Inland Waterways Navigation"
Option:	Slave Display

### Scanner (Antenna & Turning Unit)

Antenna	MK6217RT	MK6219RT	
Antenna type:	Slotted, waveguide	7ft (2.1m)	9ft (2.7m)
Rotating speed:	32rpm or 45rpm (menu selectable)		
Beamwidth:	Horizontal	1.0° ± 0.1°	0.8° ± 0.1°
	Vertical	25° ± 2.5°	25° ± 2.5°
Gain:	30dB	32dB	

### Turning Unit

	MK6217RT	MK6219RT	
Nominal Peak Power:	6kW	6kW	
Transmitting Frequency:	(9410 ± 30)MHz	(9410 ± 30)MHz	
Pulse Width	Scales	Frequency	Mode
0.05µs	0.15 - 2km	4kHz	Short Pulse
0.1µs	2km, 4km	3kHz	Medium
Pulse			
0.25µs	2km - 32km	2kHz	Long Pulse
0.25µs	64km (no shift)	1kHz	Long Pulse
Type:	Linear		
IF (nominal):	60MHz		
IF Bandwidth (nominal):	5MHz (0.1µs and 0.25µs PW), 25 MHz (0.05µs PW)		
Noise Figure (nominal):	Better than 6dB		
Tuning:	Manual control with fine tuning indication		



Sperry Marine, with worldwide headquarters in Charlottesville, VA, and major engineering and support offices in Melville, NY, New Malden, England, and Hamburg, Germany, is part of the Northrop Grumman **Electronic Systems** sector.

This brochure, including the information contained herein, is the Intellectual Property of Northrop Grumman Corporation and as such may not be copied or reproduced without the written permission of Northrop Grumman. All specifications herein were in effect on the date of this publication. However, any technical data should not be solely relied upon and should be verified at time of order. Furthermore, equipment may vary from that specified due to the Sperry Marine policy of continual product improvement.